



Product Service

CERTIFICATE

No. Z1A 15 10 90658 037

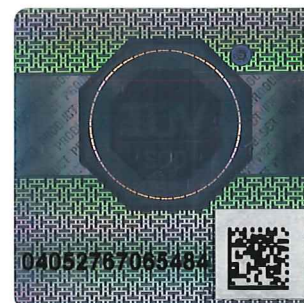
Holder of Certificate: Profim Sp.z.o.o.Gornicza 8
62-700 Turek
POLAND**Certification Mark:****Product:****Swivel Chairs****Tested according to:**DIN EN 1335-1:2002
DIN EN 1335-2:2010
DIN EN 1335-3:2009
AfPS GS 2014:01 PAK

The product meets the safety and health requirements of the German Product Safety Act section 20 to 22 ProdSG. The certification marks shown above can be affixed on the product. It is not permitted to alter the certification marks in any way. In addition the certificate holder must not transfer the certificate to third parties. This certificate is valid until the listed date, unless it is cancelled earlier. See also notes overleaf.

Test report no.: 713052481-3**Valid until:** 2020-10-21**Date,** 2015-10-22

(Jens Briesenack)

Page 1 of 2



**CERTIFICATE****No. Z1A 15 10 90658 037****Model(s): MyTurn S****Parameters:**

Seat is adjustable in height and with synchronous mechanism of seat surface inclination.

Backrest, armrests and arm pads are fixed on a defined Position.

Surface material is optionally made of leather or of synthetic material.

SEAT

- Seat height: 420 - 520 mm, adjustable
- Seat depth: 445 mm, fixed
- Depth of the seat surface: 480 mm
- Seat width: 525 mm
- Tilting of the seat surface: +1° until -11°, adjustable

BACKREST

- Height of the back pad: 855 mm, fixed
- Height of the upper edge of the backrest: 805 mm, fixed
- Width of the backrest: 500 mm
- Horizontal radius of the backrest: >400 mm
- Backrest inclination: 27°

ARMREST

- Length of the armrest: 230 mm
- Width of the armrest: 80 - 95 mm
- Height of the armrests above the seat: 243 mm, fixed
- Distance from the front of the armrests to the front edge of the seat surface: 185 mm
- Clear width between the armrests: 530 mm

UNDERFRAME

- Maximal offset of the underframe: 395 mm
- Stability dimension: 273 mm

The office swivel chairs corresponds with type C according to DIN EN 1335-1:2002.

Factory(ies): 90658