



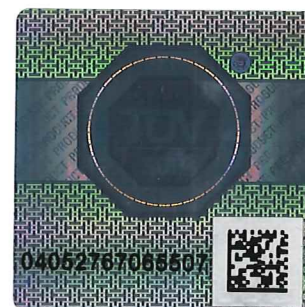
Product Service

CERTIFICATE

No. Z1A 15 10 90658 038

Holder of Certificate: Profim Sp.z.o.o.Gornicza 8
62-700 Turek
POLAND**Certification Mark:****Product:****Visitor chair
for non-domestic use****Tested
according to:**DIN EN 16139:2013
AfPS GS 2014:01 PAK

The product meets the safety and health requirements of the German Product Safety Act section 20 to 22 ProdSG. The certification marks shown above can be affixed on the product. It is not permitted to alter the certification marks in any way. In addition the certificate holder must not transfer the certificate to third parties. This certificate is valid until the listed date, unless it is cancelled earlier. See also notes overleaf.

Test report no.: 713052481-4**Valid until:** 2020-10-21**Date,** 2015-10-23
(Jens Biesenack)

Page 1 of 2

**CERTIFICATE****No. Z1A 15 10 90658 038****Model(s): MyTurn FZ****Parameters:**

Seat is adjustable in height.
Seat surface is rotatable and will turn back to the starting position, if the surface isn't loaded.
Backrest, armrests and arm pads are fixed on a defined position.
Pedestal is constructed as a four star base with gliders.
Surface material is optionally made of leather or synthetic material.

Width of the backrest:	495 mm, max.
Height of the upper backrest above the seat:	808 mm
Length of the arm rests:	245 mm, fixed
Height of the arm rest above the seat:	252 mm, fixed

Dimensions according to DIN EN 16139:2013, attachment C.

Seat height:	449 mm
Seat depth:	450 mm
Seat width:	500 mm
Width between armrests:	530 mm

Factory(ies): 90658